



**fischer** ®  
FIXING SYSTEMS

# Fischer's Products Overview



# Fischer Product Range

Fischer is the only company with its own development and production facilities in all relevant areas of fixing technology – steel, nylon and chemical fixings. On this basis, the company has produced countless fixing solutions over the years for a very broad range of applications whilst maintaining a degree of flexibility to be able to develop tailor-made customer solutions. This has made fischer the world leader in fixing technology. Fischer fixings, for fifty years a world leader in construction fixings technology.



## Bolt FBN II

The flexible, low-cost expansion type FBN bolts for the non-cracked compression zone



Bolt **FBN II**, zinc-plated steel



Bolt **FBN A4**, stainless steel

## Anchor bolt FAZ II

The strong, easy-to-install expansion type FAZ bolts for cracked concrete



Anchor bolt **FAZ II**, zinc-plated steel



Anchor bolt **FAZ A4**, stainless steel A4



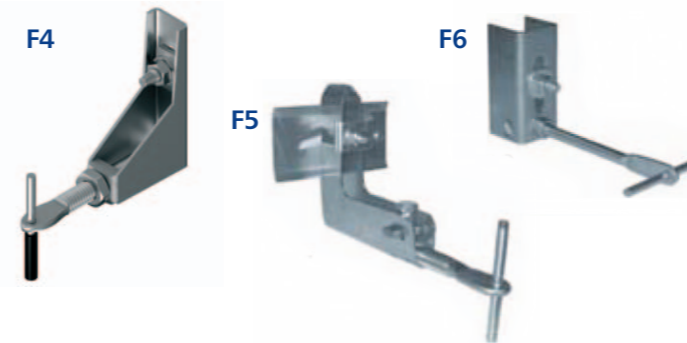
Anchor bolt **FAZ C**, highly corrosion-resistant steel 1.4529



## F2 / F3 Anchor Fixing System



## F4 / F5 / F6 Body Anchor Fixing System



## Support Frame Systems

CFS offers several choices of support frame to suit specific need of a project

CFS provides metal framing systems to give both support and restraint. These typically span floor to floor or have intermediate restraints.

Materials used include stainless steel, aluminium and galvanised mild steel. The choice will be dictated by your project weathering requirements. CFS will design the most cost effective system for your given wind and dead loads.

Designed for high loads, large-size, heavy, natural stone panels



## Injection Technique for Concrete

Resin Anchors Type FIS A



Thread Rod **FIS A**, zinc-plated steel



Injection mortar **FIS HB 345 S + static mixer FIS S**

The flexible installation and highest loads in the cracked tensile zone – Resin anchors Highbond type FHB



**FHB II-A S** (standard), zinc-plated steel



Resin capsule **FHB II-P**



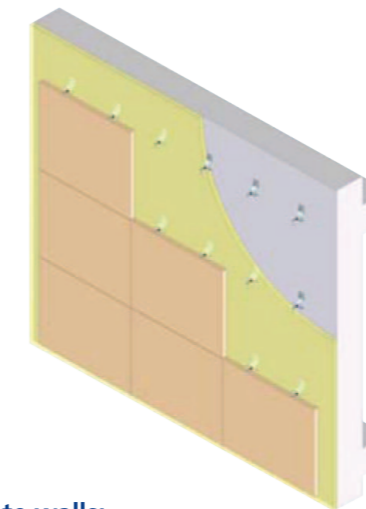
**Innovative undercut anchors for Glass fixings FZP-G-Z**

For toughened and laminated safety glass, fischer offers undercutpoint fixing FZP-G-Z with German approval. The anchor is designed to prevent transmission of compressive forces from the fixing into the face of the glass. This greatly improves impact resistance.

## Natural Stone Fixing Systems

**Systems For Thin Stone Cladding Marble and Granite**

Fixing systems accommodate all types of backing walls whether they are concrete walls, block work and masonry walls or steel structures.



**Direct fixing to concrete walls:**

Fixing to concrete with bolt anchors using expansion bolts.



**Uncut Anchors for Natural Stone Fixing Type FZP**

Undercut anchor for natural stone from 20mm panel thickness.



**Site Testing**

Site testing can be under-taken on all Fischer products. This can be particularly useful in indeterminate or unusual substrates.



**Construction Fixing Systems Limited**

Unit 2, Westfield Estate, Henley Road, Medmenham, Marlow, Buckinghamshire SL7 2TA. UK

Telephone. +44 (0) 1491 576466

Fax. +44 (0) 1491 578166

Email. [sales@cfs-fixings.co.uk](mailto:sales@cfs-fixings.co.uk)

[www.cfsfixings.com](http://www.cfsfixings.com)

